



SS-66-1

ROCKER
SWITCH

ROTARY
SWITCH

PUSH
SWITCH

MICRO
SWITCH

SLIDE
SWITCH

INDICATOR
LAMP

AC SOCKET

KEYBOARD
SWITCH

TIMER
SWITCH

POWER TOOL
SWITCH

SPECIFICATIONS



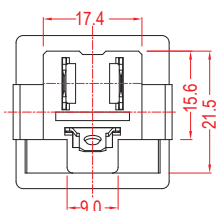
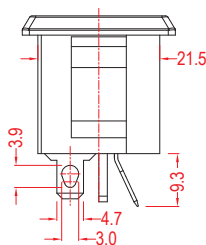
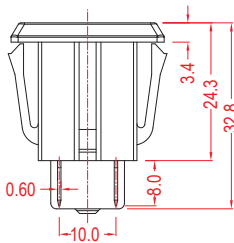
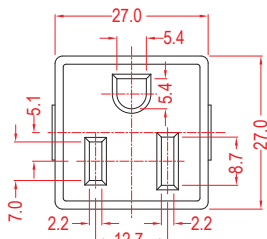
15A 125VAC

FEATURES

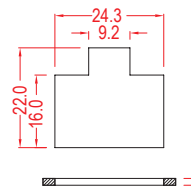
- Usage: Consumer Electronic, Electrical Appliance, Power Supply
用途：消費電子、電器、電源供應
- Reliable for main power connection
可靠主電源連接
- Temperature Rating: -10°C~70°C
額定溫度：-10°C~70°C
- Flammability Rating: UL94V-2 / Optional UL94V-0
可燃性等級：UL94V-2 / 可選 UL94V-0

ORDER INFORMATION

1	Q	BK	INTERNAL USE ONLY
PANEL THICKNESS	TERMINAL TYPE	BASE COLOR	
11.0-2.0		BK BLACK	
2.2-3.0		WT WHITE	
		GE GREY	

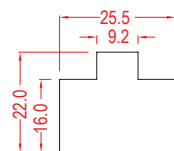


PANEL THICKNESS: 1.0-2.0MM



1.0 - 2.0

PANEL THICKNESS: 2.0-3.0MM



2.0 - 3.0