

PM32

PUSH SWITCH PM32 SERIES



PM32

SPECIFICATIONS

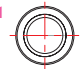
0.2A

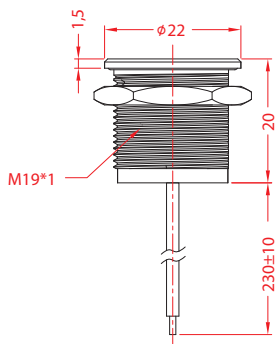
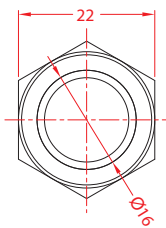
5-24VAC/DC

FEATURES

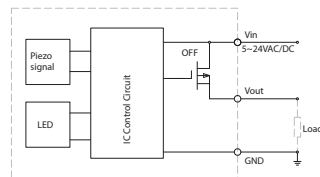
- Usage: Kitchen appliance, Medical device, Industrial machine
用途：廚房家電、醫療器械、工業機械
- Metal housing. Explosion-proof, Signal and Power switch
金屬外殼·防爆設計·訊號及主開關應用
- With IC control operated by touching
觸摸操作IC控制
- With Indicator lamp design
帶指示燈設計
- Temperature Rating: -25°C~75°C
額定溫度：-25°C~75°C
- Flammability Rating: UL94V-2 / Optional UL94V-0
可燃性等級：UL94V-2 / 可選 UL94V-0

ORDER INFORMATION

D	S	1	1	BL	1	INTERNAL USE ONLY	
FUNCTION	CURRENT	HOUSING TYPE	BUTTON TYPE	LAMP COLOR	LEAD LENGTH(CM)		
D One_Shot	S 0.2A 5~24VAC/DC	1 Stainless steel	1 	OFF Status BL Blue	1 23		
A Toggle				ON Status GR Green			
A1 Dimmer							

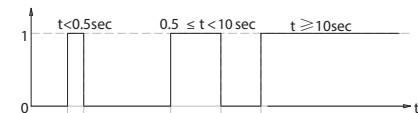


Circuit diagram



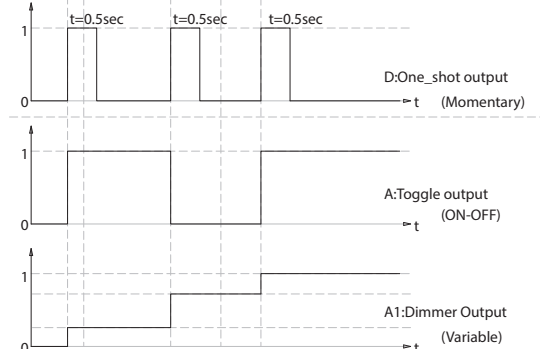
1.Finger press on the switch

1=Pressing
0=releasing

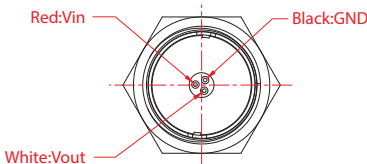


2.Output status

1=High level
0=Low level



*Other more functions are available upon request



ROCKER SWITCH

ROTARY SWITCH

PUSH SWITCH

MICRO SWITCH

SLIDE SWITCH

INDICATOR LAMP

AC SOCKET

KEYBOARD SWITCH

TIMER SWITCH

POWER TOOL SWITCH