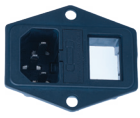


SK11

AC SOCKET SK11 SERIES



SK11



SK11



SK11



SK11

SPECIFICATIONS



10A

250VAC



15A

125/ 250VAC

FEATURES

- Usage: Consumer Electronic, Electrical Appliance, Power Supply
用途：消費電子、電器、電源供應
- Reliable for main power connection
可靠主電源連接
- 3 Poles Fuse & Switch optional
3極·保險絲和開關可選
- Temperature Rating: 0°C~70°C
額定溫度：-10°C~70°C
- Flammability Rating: UL94V-2 / Optional UL94V-0
可燃性等級：UL94V-2 / 可選 UL94V-0

ORDER INFORMATION



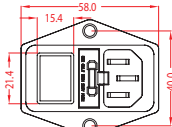
MODEL

SK11

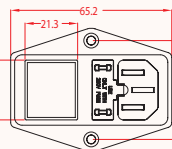
SK11A

BASE TYPE

1



2



BASE COLOR

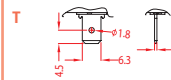
BK BLACK

PIN

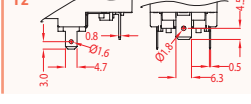
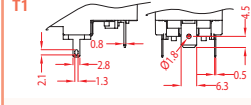
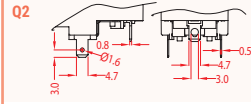
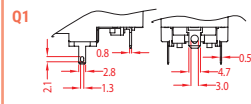
3 3 PIN

TERMINAL TYPE

FOR SK11



FOR SK11A



FUSE OPTION*

0 None

F1 1pc fuse

(For SK11 only)

F2 2pcs fuses

SWITCH OPTION**

0 None

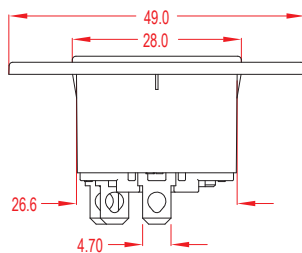
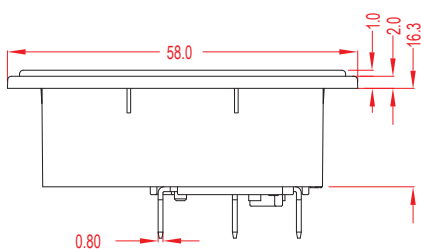
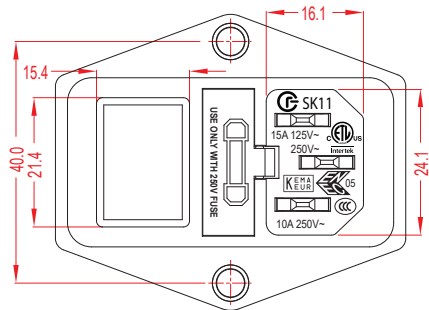
SW With Switch

INTERNAL USE ONLY

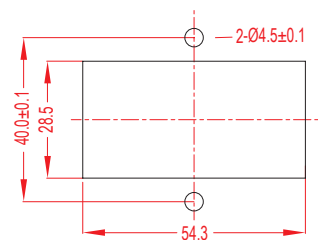
Note:

* with fuse version, client need provide fuse request

**with switch version, client need provide switch request



SUGGESTED PANEL HOLE SIZE



ROCKER SWITCH

ROTARY SWITCH

PUSH SWITCH

MICRO SWITCH

SLIDE SWITCH

INDICATOR LAMP

AC SOCKET

KEYBOARD SWITCH

TIMER SWITCH

POWER TOOL SWITCH