

LH-580/581

INDICATOR LAMP

LH-580/581 SERIES



LH-580



LH-580



LH-580

ROCKER SWITCH

ROTARY SWITCH

PUSH SWITCH

MICRO SWITCH

SLIDE SWITCH

INDICATOR LAMP

AC SOCKET

KEYBOARD SWITCH

TIMER SWITCH

POWER TOOL SWITCH

SPECIFICATIONS



Neon and Fluorescent bulbs
110(130)V, 230(250)V, 400V T100 T125

LED
2V, 6V, 12(14)V, 24(28)V T85 T125
36V, 48V, 400V, 110V/230V




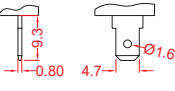

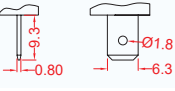
Neon and Fluorescent bulbs
110(130)V, 230(250)V, 400V T100

LED
2V, 6V, 12(14)V, 24(28)V T85
36V, 48V, 110V/230V

FEATURES

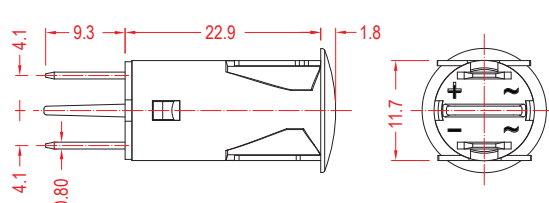
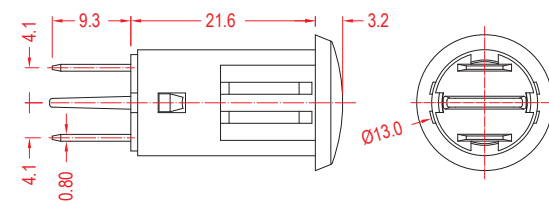
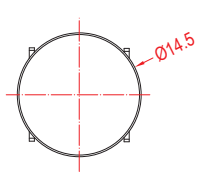
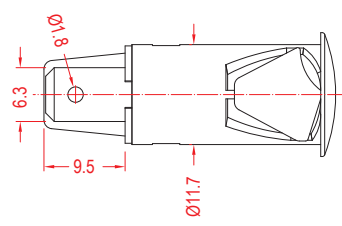
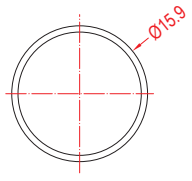
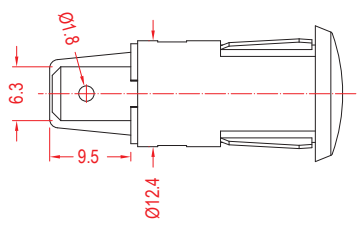
- Usage: Kitchen Machine, Medical Device, Industrial Machine
用途：廚房機械、醫療器械、工業機械
- LED/Neon Lamp options
LED/氖燈選項
- Wire terminal option
接線端子選項
- KEMA/ENEC/UL Approval
KEMA/ENEC/UL 認證
- Temperature Rating: -10°C~100°C for Neon Lamp, 10°C~85°C for LED
額定溫度：氖燈-10°C~100°C · LED 10°C~85°C

ORDER INFORMATION

0	1	OR	N01	Q	INTERNAL USE ONLY
TYPE	BUTTON TYPE	BUTTON COLOR	LAMP TYPE/VOLTAGE	TERMINAL TYPE/ LEAD WIRE	
0 QC Terminal	1 	OR AMBER	N01 Neon 110(130)V	Q 	
1 w/Lead Wire	2 	CL CLEAR	N02 Neon 230(250)V	T 	
		RE RED	N03 Neon 400V		
		GR GREEN	L11 LED 6V		
			L12 LED 12 (14)V		
			L13 LED 24 (28)V		
			L14 LED 2V		
			L15 LED 36V		
			L16 LED 48V		
			L20 LED 400V		
			L21 LED 110V/230V(100~250V)		

1 Lead Wire 100mm
Other length of lead wire are available upon request

Remarks:
1) Standard Rating 2~400V=1.0W Max
2) Terminal Q and T not applicable to LH-581



SUGGESTED PANEL HOLE SIZE



SUGGESTED PANEL HOLE SIZE

