

# MC23

# MICRO SWITCH MC23 SERIES



MC23

## SPECIFICATIONS

0.1A	48VDC	40T125μ	5E4
0.5A	125/250VAC	40T125μ	5E4
5A GP	125/250VAC	40T125μ	5E4
6A	30VDC	40T125μ	5E4
1/6HP	125VAC	40T125μ	1E4
1/3HP	250VAC	40T125μ	1E4
10(3)A	125/250VAC	40T125μ	1E4
10A GP	125/250VAC	40T125μ	1E4
6(3)A	125/250VAC	40T85μ/40T125μ	5E4



## FEATURES

- Usage: Kitchen machine, Robot, Electrical Wheelchair, EV Charger  
用途：廚房機械、機器人、電動輪椅、電動車充電器
- Waterproof IP65 / IP67 option  
防水 IP65 / IP67 選項
- With lever option  
帶槓桿選項
- Operating force option  
操作力選項
- Temperature Rating: -40°C~85°C/125°C  
額定溫度：-40°C~85°C/125°C
- Flammability Rating: UL94V-2 / Optional UL94V-0  
可燃性等級：UL94V-2 / 可選 UL94V-0

## ORDER INFORMATION

W1	D	S	1	N	O	Q
PROTECTION TYPE  IP65 IP67	FUNCTION D (ON)-OFF E ON-(OFF) F ON-(ON)	RATING S 0.1A 48VDC 40T125μ 5E4 0.5A 125/250VAC 40T125μ 5E4 M 5A GP 125/250VAC 40T125μ 5E4 6A 30VDC 40T125μ 5E4 1/6HP 125VAC 40T125μ 1E4 1/3HP 250VAC 40T125μ 1E4 6(3)A 125/250VAC 40T85μ/40T125μ 5E4 L 10(3)A 125/250VAC 40T125μ 1E4 10A GP 125/250VAC 40T125μ 1E4	OPERATING FORCE MAX. WITHOUT LEVER *1 50 g.f *2 100 g.f *3 150 g.f 4 200 g.f *5 300 g.f <small>*Without tooling for NO.1,NO.2,NO.3,NO.5</small>	LEVER POSITION N No Lever S Standard Ratio H High Ratio	KNOB/LEVER TYPE Please see next page	TERMINAL/ WIRING INTERNAL USE ONLY Q Q1 T* W1 W2

## KNOB/LEVER TYPE

0	4	8
1	*5	
2	6	
3	7	

W1 20AWG (0.52mm<sup>2</sup>) for S and M Rating  
W2 18AWG (0.82mm<sup>2</sup>) for L Rating

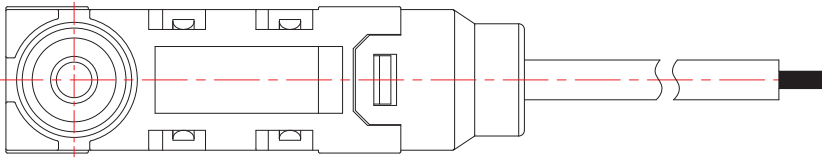
Standard wire length:300mm  
\*Without tooling for T terminal

	Operating Force Max. without lever	Releasing Force Min. without lever
*1	50g.f	15g.f
*2	100g.f	30g.f
*3	150g.f	40g.f
4	200g.f	60g.f
*5	300g.f	80g.f

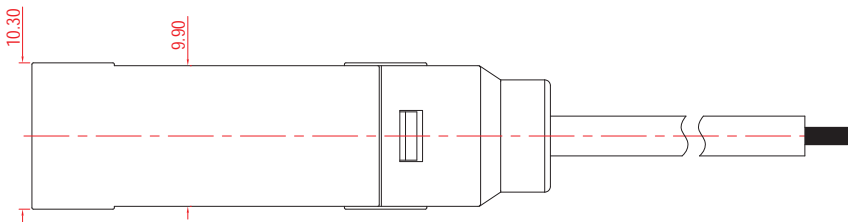
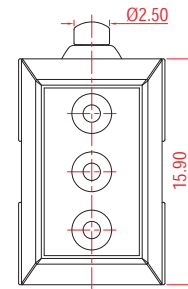
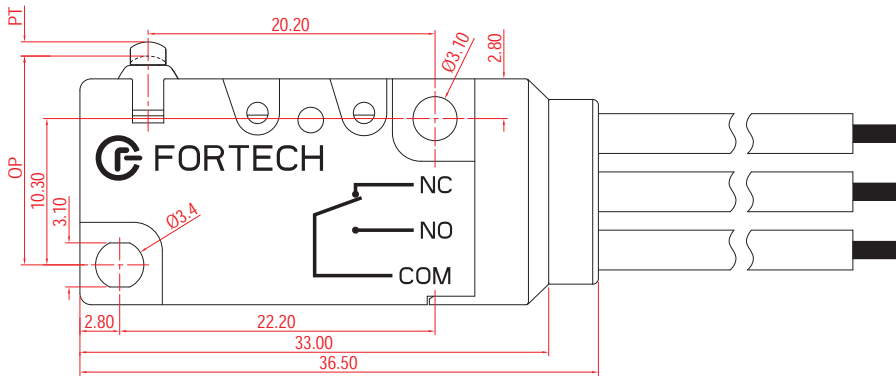
\*Without tooling for NO.1, NO.2, NO.3, NO.5

\*Without tooling for NO.5

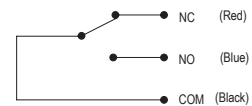
### FOR W2



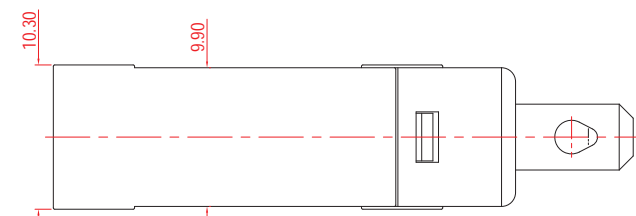
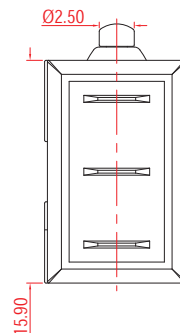
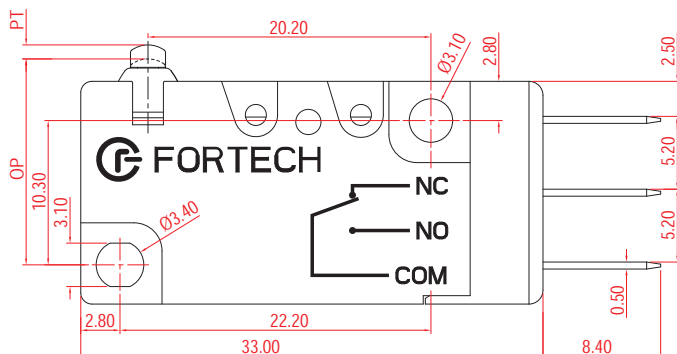
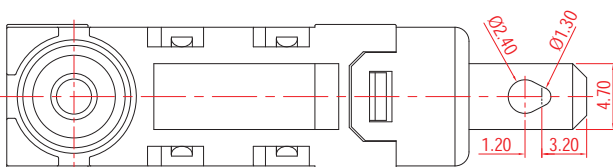
Operating Force	OF Max.	Refer to page 3
Releasing Force	RF Min.	
Pretravel	PT Max.	1.2mm
Overtravel	OT Min.	1.0mm
Movement Differential	MD Max.	0.4mm
Operating Position	OP	14.7±0.4mm



#### CIRCUIT DIAGRAM

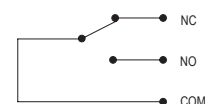


### FOR W1



Operating Force	OF Max.	Refer to page 4
Releasing Force	RF Min.	
Pretravel	PT Max.	1.2mm
Overtravel	OT Min.	1.0mm
Movement Differential	MD Max.	0.4mm
Operating Position	OP	14.7±0.4mm

#### CIRCUIT DIAGRAM



ROCKER SWITCH

ROTARY SWITCH

PUSH SWITCH

MICRO SWITCH

SLIDE SWITCH

INDICATOR LAMP

AC SOCKET

KEYBOARD SWITCH

TIMER SWITCH

POWER SWITCH