

PM31

PUSH SWITCH PM31 SERIES



PM31

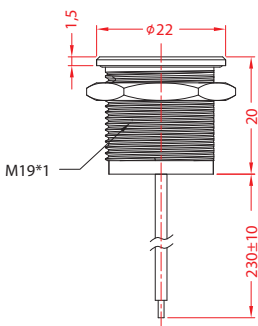
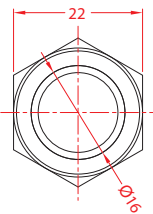
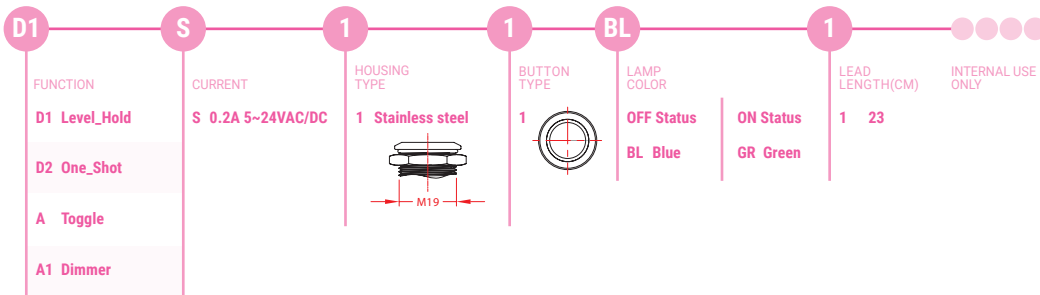
SPECIFICATIONS

0.2A 5-24VAC/DC

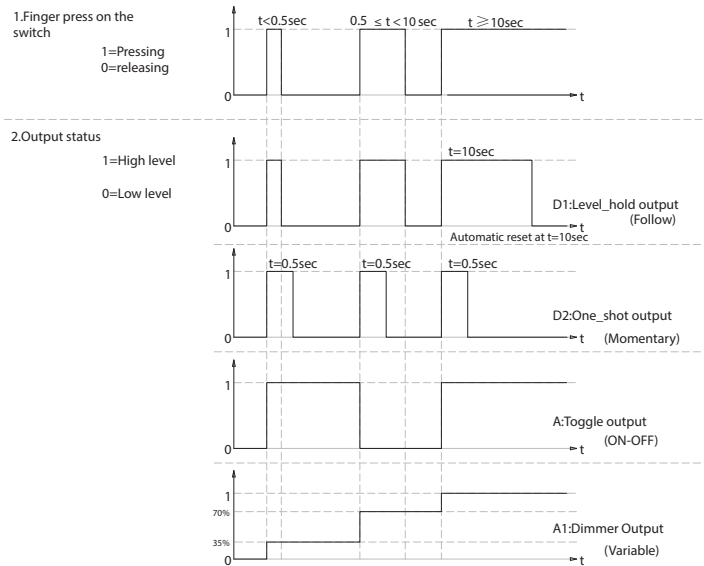
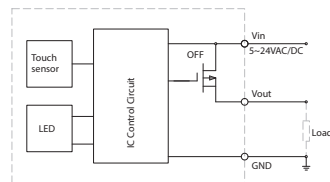
FEATURES

- Usage: Kitchen appliance, Medical device, Industrial machine
用途：廚房家電、醫療器械、工業機械
- Metal housing. Explosion-proof, Signal and Power switch
金屬外殼·防爆設計·訊號及主開關應用
- With IC control operated by touching
觸摸操作IC控制
- With Indicator lamp design
帶指示燈設計
- Temperature Rating: -25°C~75°C
額定溫度：-25°C~75°C
- Flammability Rating: UL94V-2 / Optional UL94V-0
可燃性等級：UL94V-2 / 可選 UL94V-0

ORDER INFORMATION



Circuit diagram



*Other more functions are available upon request