

# ST-100

## ROTARY SWITCH ST-100 SERIES

ROCKER SWITCH



ST-100

ST-100

ST-100

ROTARY SWITCH

### SPECIFICATIONS



16A 125/250VAC T125 3E3



16A 125/250VAC T125  
(Voltage Selector)

RECOGNIZED COMPONENT



Conforms to UL STD. 61058-1.  
Certified To CSA STD. C22.2  
No. 61058-1.

16A GP 125/250VAC T125 6E3

### FEATURES

- Design for dual voltage product  
雙電壓產品設計
- 2 positions  
2個檔位
- Temperature Rating: -10°C~125°C  
額定溫度：-10°C~125°C
- Flammability Rating: UL94V-2 / Optional UL94V-0  
可燃性等級：UL94V-2 / 可選 UL94V-0

PUSH SWITCH

MICRO SWITCH

SLIDE SWITCH

INDICATOR LAMP

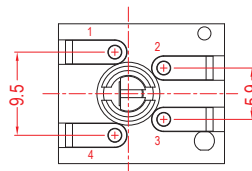
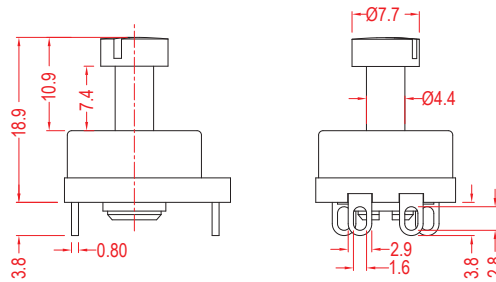
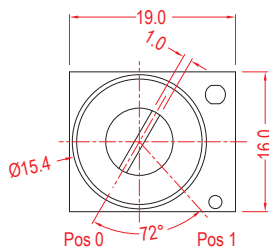
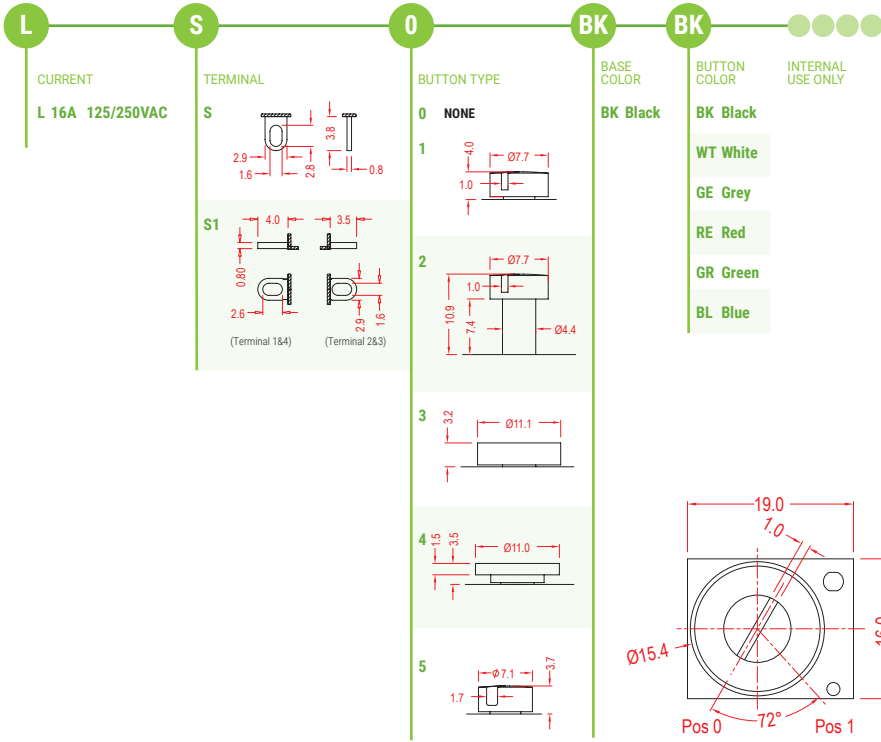
AC SOCKET

KEYBOARD SWITCH

TIMER SWITCH

POWER TOOL SWITCH

### ORDER INFORMATION



### CIRCUIT

Position	Connected
0	1+2/3+4
1	2+3