

# SR-55

## ROCKER SWITCH SR-55 SERIES



SR-55AA



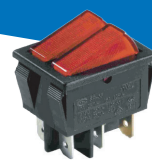
SR-55AA



SR-55AI



SR-55II



SR-55NN



SR-55NN

ROCKER SWITCH

ROTARY SWITCH

PUSH SWITCH

MICRO SWITCH

SLIDE SWITCH

INDICATOR LAMP

AC SOCKET

KEYBOARD SWITCH

TIMER SWITCH

POWER TOOL SWITCH

### SPECIFICATIONS

	10(3)A	250VAC	T125/55	5E4
	16(4)A	250VAC	T125/55	
	10(8)A	250VAC	T125/55	
	10A	250VAC	T105	
	16A	125VAC		
	1/2HP	250VAC	T105	
	1/4HP	125VAC		

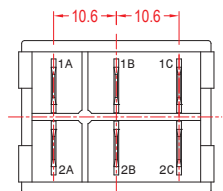
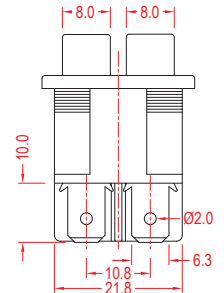
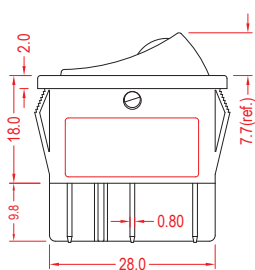
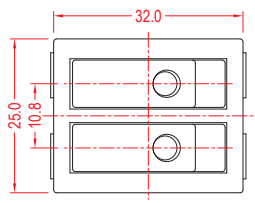


### FEATURES

- Usage: General purpose  
用途：通用
- Double rocker switch design with waterproof cap  
帶防水帽的雙翻板開關設計
- Single Pole. Separation plate  
單極·帶隔板
- Multi-function/Lamp/Indicator function  
切合不同使用功能//Lamp/Indicator功能
- Temperature Rating: -10°C~125°C  
額定溫度：-10°C~125°C
- Flammability Rating: UL94V-2 / Optional UL94V-0  
可燃性等級：UL94V-2 / 可選 UL94V-0

### ORDER INFORMATION

A	L	T	1	BK	BK	1	0	0	00	0	
FUNCTION OF LEFT/RIGHT BUTTON	CURRENT	TERMINAL TYPE	BASE TYPE	BASE COLOR	COLOR OF LEFT / RIGHT BUTTON	LEFT / RIGHT BUTTON TYPE	PRINTING OF LEFT / RIGHT BUTTON	COLOR OF LEFT / RIGHT BUTTON PRINTING	COLOR OF LEFT / RIGHT SMALL LEN	LEFT / RIGHT LAMP VOLTAGE	INTERNAL USE ONLY
<b>A ON-OFF</b>	<b>L 16(4)A 250VAC</b>	<b>T</b>	<b>3</b>	<b>BK Black</b>	<b>BK Black</b>	<b>1</b>	<b>0 NONE</b>	<b>0 None</b>	<b>00 None</b>	<b>0 None</b>	
<b>B ON-ON</b>	<b>10(3)A 250VAC 5E4</b>	<b>T1</b>		<b>WT White</b>	<b>WT White</b>	<b>2</b>	<b>1 White</b>	<b>RE Red</b>	<b>12V</b>		
<b>C ON-OFF-ON</b>	<b>16A 125VAC</b> (Except function I)	<b>T2</b>		<b>GE Grey</b>	<b>GE Grey</b>	<b>3</b>	<b>2 Black</b>	<b>GR Green</b>	<b>3 110V</b>		
<b>D (ON)-OFF</b>	<b>H 16(4)A 250VAC</b>	<b>Q</b>		<b>RE Red</b>	<b>RE Red</b>	<b>4</b>	<b>3 Red</b>	<b>BL Blue</b>	<b>4 220V</b>		
<b>E ON-(OFF)</b>	<b>10(3)A 250VAC 5E4</b>	<b>S</b>		<b>GR Green</b>	<b>GR Green</b>	<b>5</b>	<b>4 Blue</b>	<b>OR Amber</b>			
<b>F ON-(ON)</b>	<b>16A 125VAC</b>	<b>P</b>		<b>BL Blue</b>	<b>BL Blue</b>	<b>6</b>	<b>5 Yellow</b>				
<b>M ON-OFF-(ON)</b>	<b>1/2HP 250VAC</b>			<b>OR Amber</b>	<b>OR Amber</b>	<b>7</b>					
<b>X (ON)-OFF-(ON)</b>	<b>1/4HP 125VAC</b> (For A,B,N,P functions only)			<b>YE Yellow</b>	<b>YE Yellow</b>	<b>8</b>					
<b>N ON-OFF w/lamp</b> (Unswitched neutral)						<b>R</b>					
<b>P ON-OFF w/lamp</b> (Switched neutral)						<b>I</b>					
<b>I Indicator</b>											



### SUGGESTED PANEL HOLE SIZE

Panel thickness	x
0.75 ~ 1.25	30.3
1.25 ~ 2.0	30.5
2.0 ~ 3.0	30.7

