

# SB-60

## PUSH SWITCH SB-60 SERIES



SB-60A



SB-60N



SB-60 CAP

### SPECIFICATIONS



E199326

8(8)A	250VAC	T105/55	5E4
16(8)A	250VAC	T105/55	
16A	250VAC	T105	
16A	125VAC		
1HP	250VAC	T105	
1/2HP	125VAC		

### FEATURES

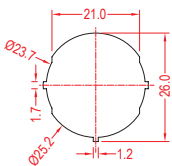
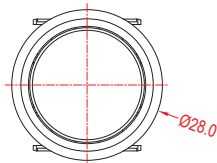
- Usage: iron, coffee machine, meat cutting machine, high power  
用途：熨斗、咖啡機、切肉機、高功率
- Round button design  
圓形按鈕設計
- High rating design for main power switch  
主電源開關的高額定值設計
- With indicator lamp option  
帶指示燈選項
- Waterproof cap option  
防水蓋選項
- Single pole, double pole option with separated plate  
單極、雙極選項·帶隔板
- Temperature Rating: -10°C~105°C  
額定溫度：-10°C~105°C
- Flammability Rating: UL94V-2 / Optional UL94V-0  
可燃性等級：UL94V-2 / 可選 UL94V-0

### ORDER INFORMATION

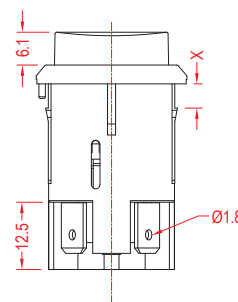
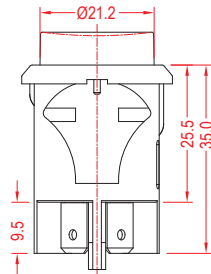
A	1	H	1	BK	BK	1	0	0	T	0		
FUNCTION	NO. OF POLES	CURRENT	BASE TYPE	BASE COLOR	KNOB COLOR	KNOB TYPE	PRINTING	COLOR OF PRINTING	TERMINAL TYPE	LAMP VOLTAGE	INTERNAL USE ONLY	
A ON-OFF w/lock	1 Single	H 16(8)A 250VAC 8(8)A 250VAC 5E4	1	BK Black	BK Black	1	0 NONE	0 None	T	0 None		
D (ON)-OFF	2 Double	16A 125VAC	2	WT White	GE Grey		1	1 White		1 12V		
N ON-OFF w/lamp		1HP 250VAC	3	RE Red	GR Green		2	2 Black		2 24V		
R (ON)-OFF w/lamp		1/2HP 125VAC		BL Blue	OR Amber		3	3 Red		3 110V		
				YE Yellow			4	4 Blue		4 220V		
							5	5 Yellow				

### SUGGESTED PANEL HOLE SIZE

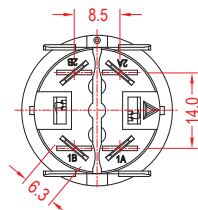
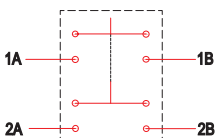
Panel thickness	x
0.70 ~ 3.50	3.5
0.70 ~ 4.50	4.5



Best performance for Panel thickness at 3.0~3.5mm for 3.5mm; 4.0~4.5mm for 4.5mm.



### CIRCUIT DIAGRAM



ROCKER SWITCH

ROTARY SWITCH

PUSH SWITCH

MICRO SWITCH

SLIDE SWITCH

INDICATOR LAMP

AC SOCKET

KEYBOARD SWITCH

TIMER SWITCH

POWER TOOL SWITCH