



# SB-60 Series



SB-60N



SB-60A



SB-60N w/Bezel



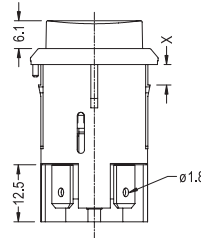
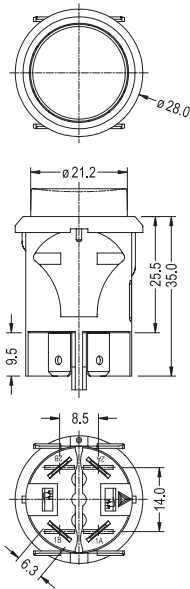
SB-60 Cap

## Specifications:

8(8)A 250VAC T105/55 5E4  
16(8)A 250VAC T105/55

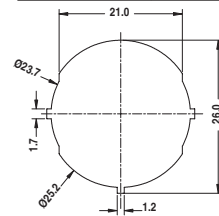


16A 250VAC T105  
16A 125VAC T105  
1HP 250VAC T105  
1/2HP 125VAC T105

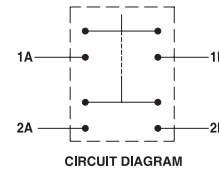


Suggested panel hole size

Panel thickness	X
0.70~3.50	3.5
0.70~4.50	4.5



Best performance for Panel thickness at 3.0~3.5mm for 3.5mm; 4.0~4.5mm for 4.5mm.



## SB-60

A — 2 — H — 1 — BK — BK — 1 — 0 — 0 — T — 0 —

Function	No. of Poles	Current	Base Type	Base Color	Knob Color	Knob Type	Printing	Color of Printing	Terminal Type	Lamp Voltage	Internal Use Only
A ON-OFF w/lock	1 Single	H 16(8)A 250VAC		BK Black	BK Black		0 None	0 None		0 None	
D (ON)-OFF	2 Double	8(8)A 250VAC 5E4		WT White	1		1	1 White		1 12V	
N ON-OFF w/lamp		16A 125VAC		GE Grey	2		2	2 Black		2 24V	
		1HP 250VAC	RE Red	3	3	3 Red	3 110V				
		1/2HP 125VAC	GR Green	4	4	4 Blue	4 220V				
				BL Blue		5	5 Yellow				
				OR Amber							
				YE Yellow							

PUSH SWITCH