

SS-61

AC SOCKET SS-61 SERIES



SS-61

SPECIFICATIONS



15A

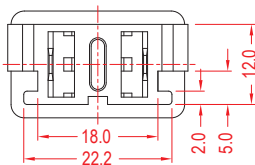
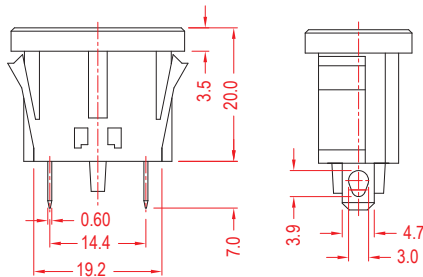
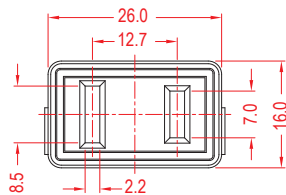
125VAC

FEATURES

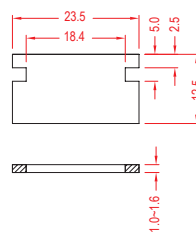
- Usage: Consumer Electronic, Electrical Appliance, Power Supply
用途：消費電子、電器、電源供應
- Reliable for main power connection
可靠主電源連接
- Temperature Rating: -10°C~70°C
額定溫度：-10°C~70°C
- Flammability Rating: UL94V-2 / Optional UL94V-0
可燃性等級：UL94V-2 / 可選 UL94V-0

ORDER INFORMATION

<p>Q</p> <p>TERMINAL TYPE</p>	<p>BK</p> <p>INTERNAL USE ONLY</p> <p>BK BLACK</p> <p>WT WHITE</p> <p>GE GREY</p>
--------------------------------------	---



PANEL THICKNESS(1.0~1.6MM)



ROCKER SWITCH

ROTARY SWITCH

PUSH SWITCH

MICRO SWITCH

SLIDE SWITCH

INDICATOR LAMP

AC SOCKET

KEYBOARD SWITCH

TIMER SWITCH

POWER TOOL SWITCH