

# SR-15

# ROCKER SWITCH SR-15 SERIES



SR-15AA

## SPECIFICATIONS

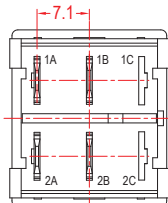
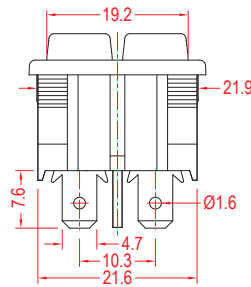
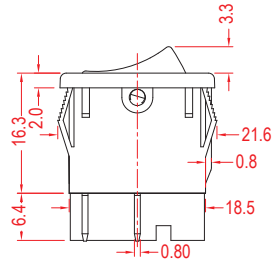
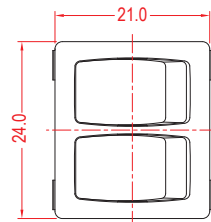
	6(4)A	250VAC	T105	5E4
	10(8)A	250VAC	T105	
 E199326	10(8)A	125VAC/250VAC	T105	
	6(4)A	125VAC/250VAC	T105	5E4
	1/2HP	125VAC/250VAC	T105	6E3
	16A GP	125VAC	T105	

## FEATURES

- Usage: General purpose  
用途：通用
- Double rocker switch design  
雙翻板開關設計
- Single Pole. Separation plate  
單極·帶隔板
- Multi-function  
切合不同使用功能
- Temperature Rating: -10°C~105°C  
額定溫度：-10°C~105°C
- Flammability Rating: UL94V-2 / Optional UL94V-0  
可燃性等級：UL94V-2 / 可選 UL94V-0

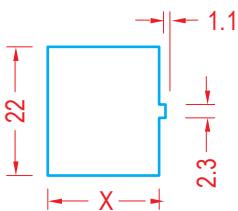
## ORDER INFORMATION

A	L	Q	1	BK	BK	1	0	0	
FUNCTION	CURRENT	TERMINAL TYPE	BASE TYPE	BASE COLOR	BUTTON COLOR	BUTTON TYPE	PRINTING	COLOR OF PRINTING	INTERNAL USE ONLY
A ON-OFF	L 10(8)A 250VAC	Q	1	BK Black	BK Black	1	0 NONE	0 None	
B ON-ON	6(4)A 250VAC 5E4	S1	1	WT White	WT White	2	1	1 White	
C ON-OFF-ON	16A GP 125VAC			GE Grey	GE Grey		2	2 Black	
D (ON)-OFF	1/2HP 125VAC /250VAC			RE Red	RE Red		3	3 Red	
E ON-(OFF)				GR Green	GR Green		4	4 Blue	
F ON-(ON)				BL Blue	BL Blue		5	5 Yellow	
M ON-OFF-(ON)				OR Amber	OR Amber		6		
X (ON)-OFF-(ON)				YE Yellow	YE Yellow		7		
							8		
							9		



## SUGGESTED PANEL HOLE SIZE

Panel thickness	x
0.75 ~ 1.25	19.2
1.25 ~ 2.0	19.4
2.0 ~ 3.0	19.6



ROCKER SWITCH

ROTARY SWITCH

PUSH SWITCH

MICRO SWITCH

SLIDE SWITCH

INDICATOR LAMP

AC SOCKET

KEYBOARD SWITCH

TIMER SWITCH

POWER TOOL SWITCH