



# SB-53 Series

Patent No.: 0900726.9M004 / 200930188396.7



SB-53A



SB-53N



SB-53N



SB-53N



SB-53N(2)



SB-53N(3)

## Specifications:

8(8)A 250VAC T85/55 5E4  
 8(8)A 250VAC T125/55  
 16(6)A 250VAC T105/55

IP65 waterproof protection for button type no.2 (SGS approved)

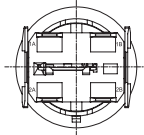
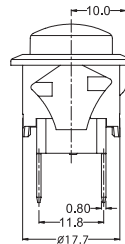
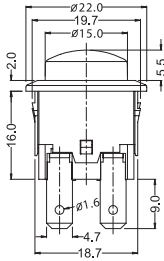
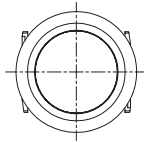


8(8)A 250VAC T85/55 5E4  
 16(6)A 250VAC T105/55  
 16(6)A 125VAC T105/55  
 1/2 HP 250VAC T105/55  
 1/4 HP 125VAC T105/55



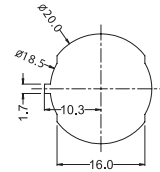
\*UL61058 approved

PUSH SWITCH

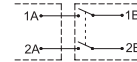


Suggested panel hole size

Panel thickness
2.0
3.0



CIRCUIT DIAGRAM



## SB-53

A — 2 — L — 1 — BK — BK — 1 — 0 — 0 — Q — 0 — □□□

Function	No. of Poles	Current	Base Type	Base Color	Knob Color	Knob Type	Printing	Color of Printing	Terminal Type	Lamp Voltage	Internal Use Only		
A ON-OFF w/lock	1 Single	L 16(6)A 125/250VAC	  (For waterproof knob 2 only)	BK Black	BK Black	  (For waterproof function only)	0 None	0 None	 	0 None			
D (ON)-OFF	2 Double	8(8)A 250VAC 5E4 8(8)A 250VAC 1/2HP 250VAC 1/4HP 125VAC		WT White	WT White							1 White	1 12V
N ON-OFF w/lamp				GE Grey	GE Grey							2 24V	
				RE Red	RE Red					3 Red		3 110V	
				GR Green	GR Green					4 Blue		4 220V	
				BL Blue	BL Blue			5 Yellow					
				OR Amber	OR Amber								
				YE Yellow	YE Yellow								