



SR-06NR Series



SR-06NR-M



SR-06NR-N (R)



SR-06NR-N



SR-06NR-I (Indicator Lamp)



SR-06NR-Y



SR-06NR-N (Glossy Button)



SR-06NR Cap

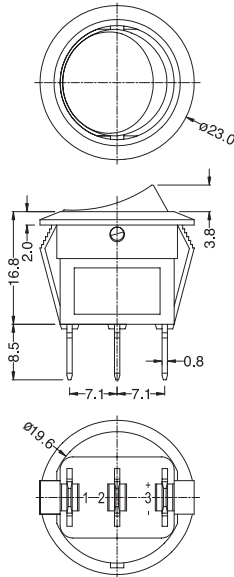
ROCKER SWITCH

Specifications:

6(6)A	250VAC	T85	T125/55	5E4
8A	250VAC	T85	T105/55	15E3
10(3)A	250VAC	T85		
10(8)A	250VAC	T85		
13A	250VAC	T85		

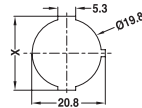


8A	250VAC	T125
16A	125VAC	T125
6.5A	250VAC	
13A	125VAC	



Suggested panel hole size

Panel thickness	X
0.75-1.25	20.3
1.25-2.0	20.8
2.0-3.0	21.1



SR-06NR

N — H2 — Q — 1 — BK — RE — 2 — 0 — 0 — 4 — 00 — □□□□

Function	Current	Terminal Type	Base Type	Base Color	Button Color	Button Type	Printing	Color of Printing	Lamp Voltage	Small Lens Color	Internal Use Only
A ON-OFF	H2 10(3)A 250VAC	Q	1	BK Black	BK Black	2	0 None	0 None	0 None	00 None	
B ON-ON	8A 250VAC			WT White	WT White		1 White	1 12V	RE Red		
C ON-OFF-ON	13A 125VAC	Q1	2	GE Grey	GE Grey	4	2 ○ —	2 Black	2 24V	GR Green	
D (ON)-OFF	(Except function I)			RE Red	RE Red		3 ○	3 Red	3 110V	BL Blue	
E ON-(OFF)	L 10(8)A 250VAC	S	3	GR Green	GR Green	5	4 — =	4 Blue	4 220V	OR Amber	
F ON-(ON)	6(6)A 250VAC 5E4			BL Blue	BL Blue		5	5 Yellow	5 2V		
M ON-OFF-(ON)	13A 250VAC 15E3	P7	3	OR Amber	OR Amber	6	6 ○	6 6V			
X (ON)-OFF-(ON)	16A 125VAC			YE Yellow	YE Yellow		7 — ○ =	7 36V			
N ON-OFF w/lamp (Unswitched neutral)	(For A, N, Y functions only)	P7	3			6	8 ON OFF	8 48V			
Y ON-OFF w/LED lamp							9 OFF ON				
I Indicator									A		
									B		
									C	HIGH OFF LOW	
									D		
									E		