

SR-12

ROCKER SWITCH SR-12 SERIES



SR-12K

ROCKER SWITCH

ROTARY SWITCH

PUSH SWITCH

MICRO SWITCH

SLIDE SWITCH

INDICATOR LAMP

AC SOCKET

KEYBOARD SWITCH

TIMER SWITCH

POWER TOOL SWITCH

SPECIFICATIONS

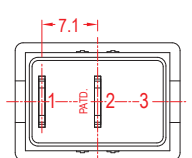
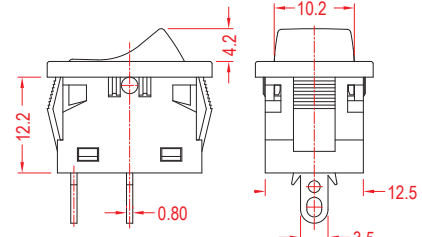
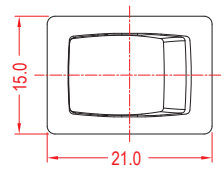
 (For A,B,C functions only)	6(6)A	250VAC	T85	3E4
	10(4)A	250VAC	T85	
 (For K,L,Q,S functions only)	6(4)A	250VAC	T85	5E4
	10(4)A	250VAC	T85	
 E199326 (For A,B,C functions only) *UL61058-1 approved	6(6)A	250VAC	T85	3E4
	10(4)A	250VAC	T85	
	15A GP	125VAC	T85	
RECOGNIZED COMPONENT Conforms to UL STD. 61058-1. Certified To CSA STD. C22.2 No. 61058-1. (For K,L,Q,S functions only)	6(4)A	250VAC/125VAC	T85	5E4
	10(4)A	250VAC/125VAC	T85	
	16(3)A	250VAC/125VAC	T85	
	16A GP	125VAC	T85	

FEATURES

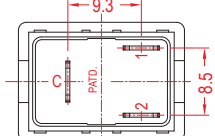
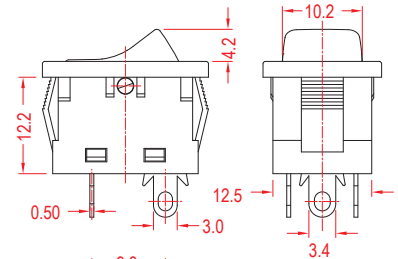
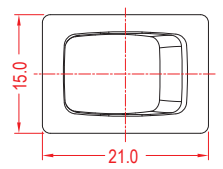
- Usage: General purpose
用途：通用
- Standard small size
標準小尺寸
- Single Pole
單極
- User-friendly function and parallel circuit design
切合使用者功能和並聯電路設計
- Double layer house structure with drain outlet design
雙層底座結構·排水口設計
- Temperature Rating: -10°C~85°C
額定溫度：-10°C~85°C
- Flammability Rating: UL94V-2 / Optional UL94V-0
可燃性等級：UL94V-2 / 可選 UL94V-0

ORDER INFORMATION

A	L	Q	1	BK	BK	1	0	0		
FUNCTION	CURRENT	TERMINAL TYPE	BASE TYPE	BASE COLOR	BUTTON COLOR	BUTTON TYPE	PRINTING	COLOR OF PRINTING	INTERNAL USE ONLY	
A ON-OFF	L 10(4)A 250VAC	Q (For A,B,C functions only)	1 (For A,B,C functions only)	BK Black	BK Black	1 (For A,B,C functions only)	0 NONE	0 None		
B ON-ON	6(6)A 250VAC 3E4	S1 (For A,B,C functions only)	2 (For A,B,C functions only)	WT White	WT White	2 (For K,L,Q,S functions only)	1 	1 White		
C ON-OFF-ON	15A GP 125VAC (For A,B,C functions only)	S2 (For K,L,Q,S functions only)		GE Grey	GE Grey	3 (For K,L,Q,S functions only)	2 	2 Black		
K OFF-ON1-ON1+2				RE Red	RE Red		3 	3 Red		
L (OFF)-ON1-ON1+2	H 10(4)A 250VAC			GR Green	GR Green		4 	4 Blue		
Q OFF-ON1-(ON1+2)	6(4)A 250VAC 5E4			BL Blue	BL Blue		5 	5 Yellow		
S (OFF)-ON1-(ON1+2)	16A GP 125VAC (For K,L,Q,S functions only)			OR Amber	OR Amber		6 			
				YE Yellow	YE Yellow		7 			
							8 			
							9 			
							A 			
							B 			
							C 			
							D 			
							E 			



(For A,B,C functions only)



(For K,L,Q,S functions only)

SUGGESTED PANEL HOLE SIZE

Panel thickness	x
1.0 ~ 1.25	19.2
1.25 ~ 2.0	19.4
2.0 ~ 3.0	19.6

FOR WHOLE SERIES

