



SR-20 Series

ROCKER SWITCH



SR-20A (Glossy Button)



SR-20N (Glossy Button)



SR-20N



SR-20N (R)



SR-06NR Cap

Specifications:

13(2)A 250VAC T85



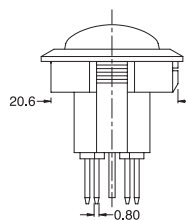
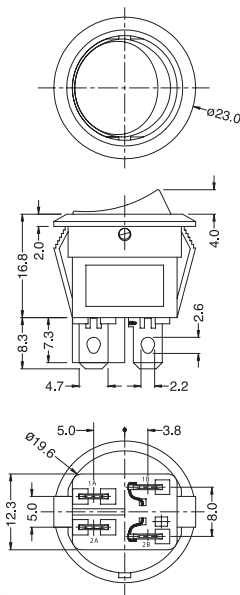
6A
12A

250VAC
125VAC

T125

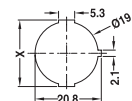


E199326



Suggested panel hole size

Panel thickness	X
0.75~1.25	20.3
1.25~2.0	20.8
2.0~3.0	21.1



SR-20

N 2 L Q 1 BK RE 6 0 0 4 00													
Function	No. of Poles	Current	Terminal Type	Base Type	Base Color	Button Color	Button Type	Printing	Color of Printing	Lamp Voltage	Small Lens Color	Internal Use Only	
A ON-OFF	1 Single	L 13(2)A 250VAC	Q	1	BK Black	BK Black	2 (Matte Surface)	0 None	0 None	0 None	00 None		
N (ON)-OFF w/lamp (Unswitched neutral)	2 Double	12A 125VAC (For A&N functions only)			WT White	WT White		1	1 White	1 12V	RE Red		
R (ON)-OFF w/lamp		L 13(2)A 250VAC (For R function only)			GE Grey	GE Grey		2	2 Black	3 110V	GR Green		
					RE Red	RE Red	R (Glossy Surface)	3	3 Red	4 220V	BL Blue		
					GR Green	GR Green		8	4 Blue		OR Amber		
					BL Blue	BL Blue		9	5 Yellow				
					OR Amber	OR Amber	6	A					
					YE Yellow	YE Yellow							

*Remark: No UL approval for SR-20-R function