



MC22D

SPECIFICATIONS

21(8)A	250VAC	25E3
20(4)A	400VAC	1E4
16(16)A	125/250VAC	5E4
16(4)A	250/400VAC	5E4
25A	250VAC	2HP
25A	125VAC	1HP
30A	42VDC	5E4
25.1A	60/42/24VDC	5E4



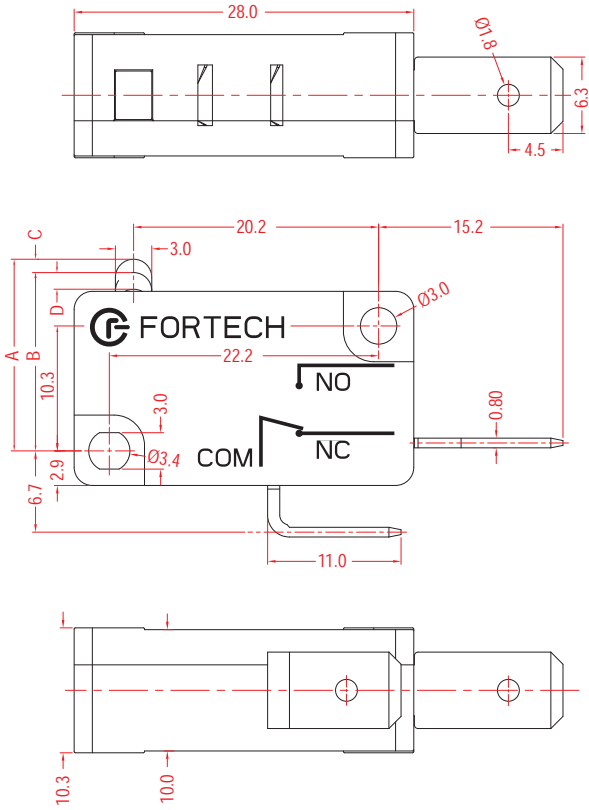
FEATURES

- Usage: Kitchen machine, Electronic & Electrical device.
用途：廚房機器, 電子及電氣設備
- Safe design for high power and high rating product
高額定值和高環境使用要求
- Contact distance option
觸點距離可選
- With lever option
帶槓桿選項
- Temperature Rating: -40°C~150°C
額定溫度：-40°C~150°C
- Flammability Rating: UL94V-2 / Optional UL94V-0
可燃性等級：UL94V-2 / 可選 UL94V-0

ORDER INFORMATION

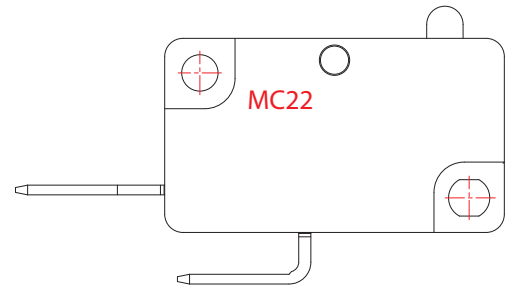
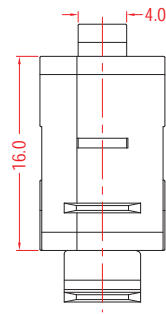
1	0	H	0	N	Q	INTERNAL USE ONLY
CONTACT DISTANCE	FUNCTION	RATING	KNOB/LEVER TYPE	LEVER POSITION	TERMINAL	
1 < 3.0mm	D (ON-OFF) 	H 21(8)A 250VAC 25E3	Please see next page	N No Lever 	Q 	S2*
2 ≥ 3.0mm	E ON-(OFF) 	20(4)A 400VAC 1E4		S Standard Ratio 	T 	P1
	F ON-(ON) 	16(16)A 125/250VAC 5E4		H High Ratio 	T1* 	P2*
		16(4)A 250/400VAC 5E4			S1* 	
		25A 250VAC 2HP				
		25A 125VAC 1HP				
		30A 42VDC 5E4				
		25.1A 60/42/24VDC 5E4				

*Without tooling for Terminal T1, S1, S2, P2



TRAVEL

A. FREE POSITION	16.2mm max
B. OPERATING POSITION	14.7±0.5mm
C. PRE TRAVEL	1.8mm max
D. OVER TRAVEL	1.3mm min



KNOB/LEVER TYPE

0	7	14	24
1	8	15	25
2	9	*17	26
3	10	18	29
4	11	19	33
5	12	20	
6	13	22	

ROCKER SWITCH

ROTARY SWITCH

PUSH SWITCH

MICRO SWITCH

SLIDE SWITCH

INDICATOR LAMP

AC SOCKET

KEYBOARD SWITCH

TIMER SWITCH

POWER SWITCH