



SL-501 Series



SL-501



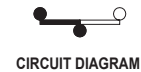
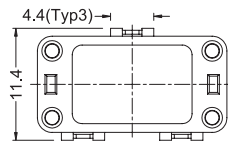
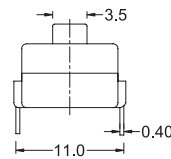
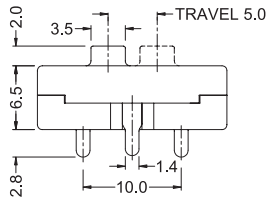
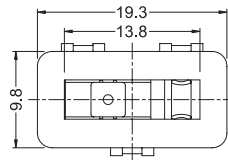
SL-501

Specifications:

3(1)A 250VAC T85



3A 250VAC T105
6A 125VAC



CIRCUIT DIAGRAM

SL-501

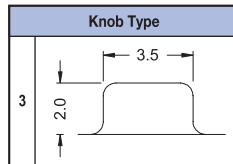
12

Circuit	
12	1P2T

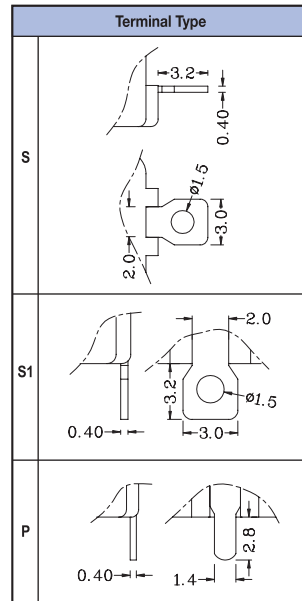
S

Current	
S	3(1)A 250VAC 6A 125VAC

3



P



Internal Use Only

SLIDE SWITCH