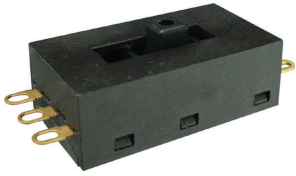




SL-401 Series

Patent No.: 0900726.9M003 / 200930188379.3



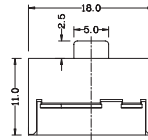
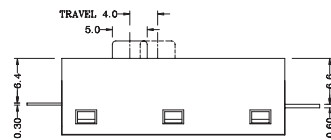
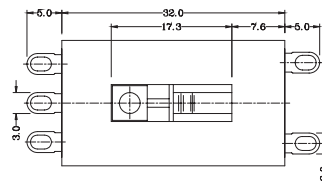
SL-401

Specifications:

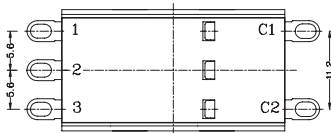
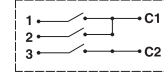
6(3)A 250VAC T85 5E4
10(3)A 250VAC T85



8A 16A 250VAC 125VAC T105



CIRCUIT DIAGRAM



SL-401

001	L	1	S
Circuit	Current	Knob Type	Terminal Type
001	L 10(3)A 250VAC	1	
002	6(3)A 250VAC 5E4		
004	16A 125VAC		
006			
007			
008			
010			
More			

Circuit Options

* Circuit:001

POSITION	ELECTRIC CIRCUIT		
	C1-1	C1-2	C2-3
1			
2			
3	●	●	●
4	●	●	●

* Circuit:002

POSITION	ELECTRIC CIRCUIT		
	C1-1	C1-2	C2-3
1			
2			
3	●	●	●
4	●	●	●

* Circuit:004

POSITION	ELECTRIC CIRCUIT		
	C1-1	C1-2	C2-3
1			
2			
3	●	●	●
4	●	●	●

* Circuit:006

POSITION	ELECTRIC CIRCUIT		
	C1-1	C1-2	C2-3
1			
2	●		
3	●	●	
4	●	●	●

* Circuit:007

POSITION	ELECTRIC CIRCUIT		
	C1-1	C1-2	C2-3
1			
2	●	●	
3	●	●	●
4	●	●	●

* Circuit:008

POSITION	ELECTRIC CIRCUIT		
	C1-1	C1-2	C2-3
1			
2		●	
3	●		
4	●	●	●

* Circuit:010

POSITION	ELECTRIC CIRCUIT		
	C1-1	C1-2	C2-3
1		●	
2	●		●
3	●	●	
4	●		

* Circuit:012

POSITION	ELECTRIC CIRCUIT		
	C1-1	C1-2	C2-3
1			
2	●		
3	●	●	
4	●	●	●

*With production mould
For more circuit options, please call factory.

SLIDE SWITCH