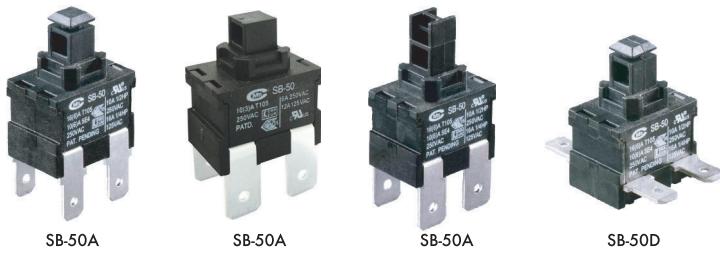




SB-50 Series

Patent No.: 0412263.4 / ZL 200430113084.7



Specifications:

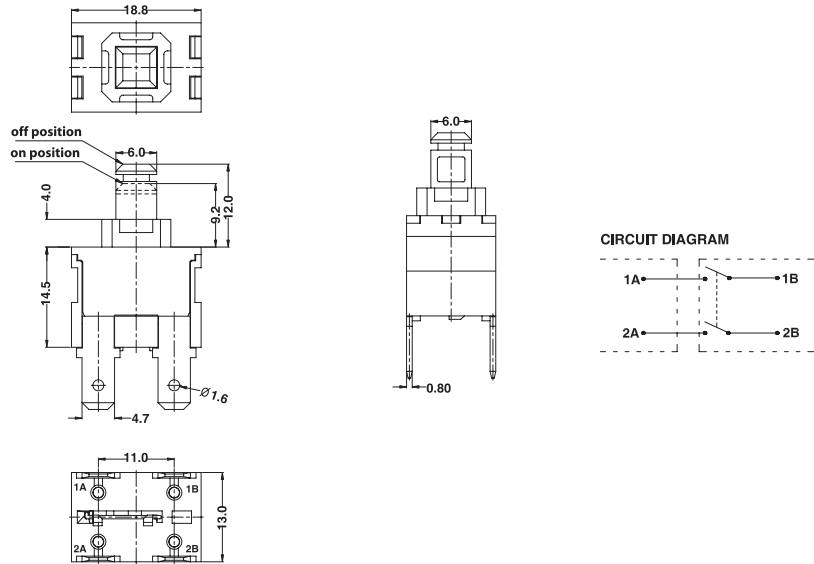
10(6)A 250VAC T105 5E4
16(6)A 250VAC T105



10A 250VAC T105
1/2HP 125VAC T105
1/4HP 125VAC



PUSH SWITCH



SB-50

A		2		L		1		1		Q		Internal Use Only
Function	No. of Poles	Current		Base Type		Knob Type		Terminal Type				
A ON-OFF w/lock	1 Single	L 16(6)A 250VAC		1		1		Q		S4		
(ON)-OFF	2 Double	10(6)A 250VAC 5E4		2		2		T		P2		
D (ON)-OFF w/sound		16A 125VAC		3		3		Q1		P3		
		1/2HP 250VAC		3		5 (For sound version only)		T1		P7		
		1/4HP 125VAC						S				